



# Quick Start Guide



For customer support scan the QR code.  
Para atención al cliente, escanee el código QR.  
Pour le support client, scannez le code QR.

## Need Help?

If you encounter any issues during usage, contact us at the number below before returning to the store

support@veltechusa.com

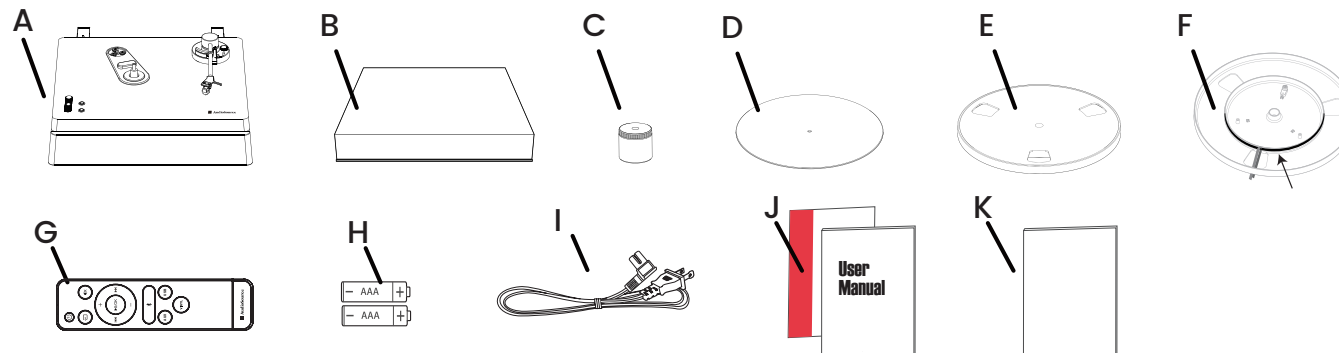
**(800) 243-0409**

## AT3345BT

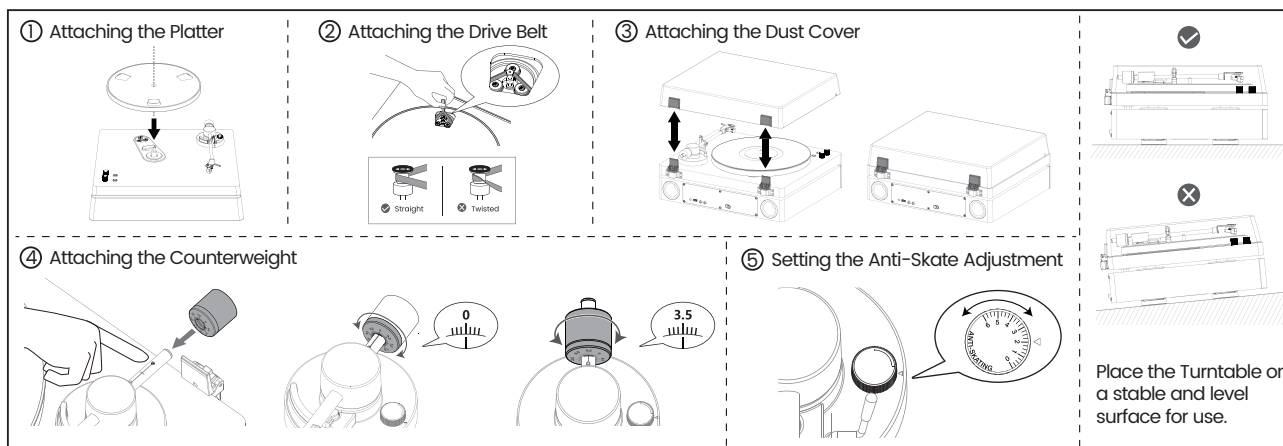
### ASSEMBLY / MONTAJE / ASSEMBLAGE

#### What's included

- A - Turntable x 1
- B - Dust Cover x 1
- C - Counterweight x 1
- D - Rubber Mat x 1
- E - Platter x 1
- F - Drive Belt x 1
- G - Remote Control x 1
- H - AAA Batteries x 2
- I - AC Power Cord x 1
- J - Quick Start Guide / User Manual
- K - Warranty Card



### Installation and Placement



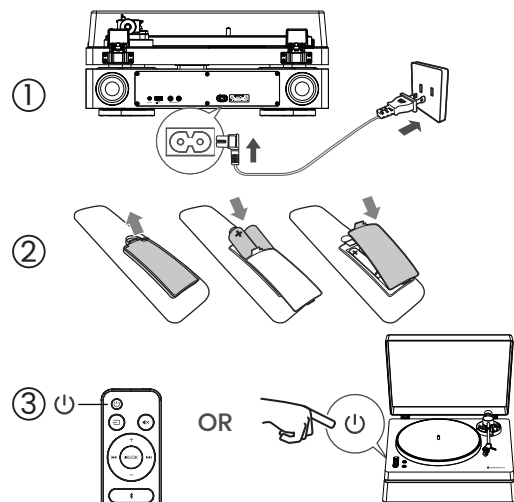
### Trademarks



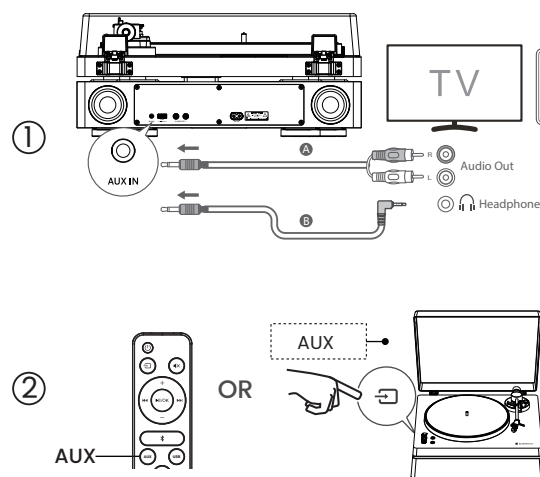
The Bluetooth® word mark and logos are registered trademarks owned by Bluetooth SIG, Inc. and any use of such marks by Zhong Shan City Richsound Electronic Industrial Ltd is under license. Other trademarks and trade names are those of their respective owners.

### Use your Turntable

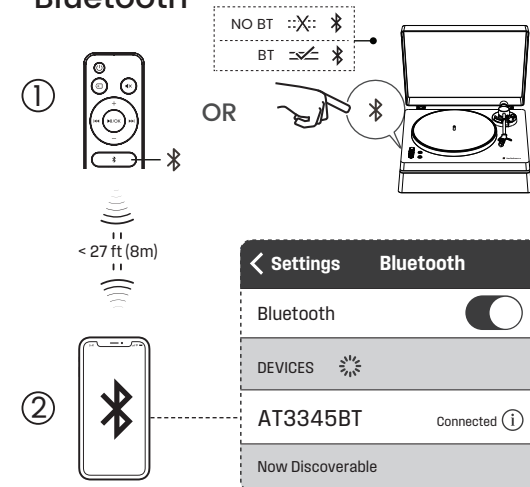
#### Standby/ON



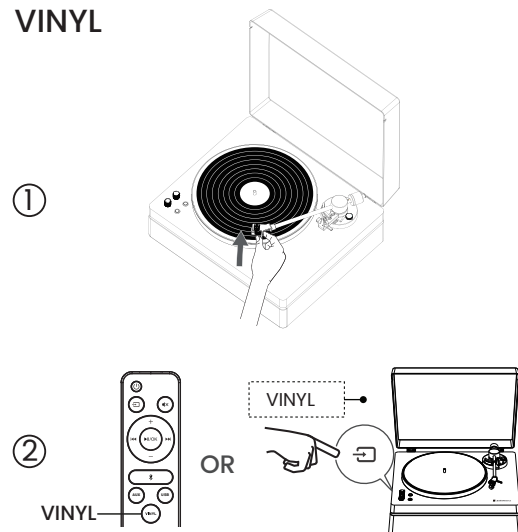
#### AUX



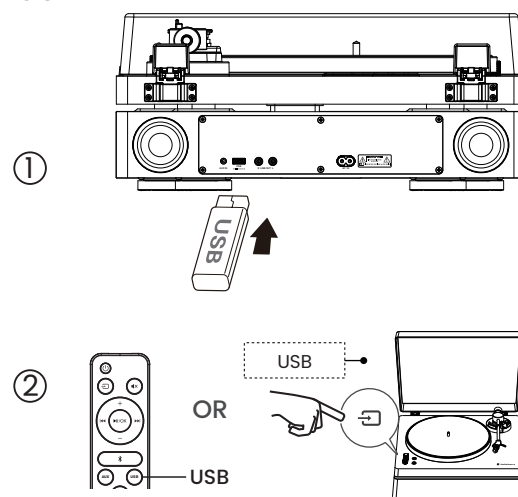
#### Bluetooth



#### VINYL



#### USB



#### LINE OUT

